

A detailed view of a CNC machine in operation. A large, complex metal part is being machined by a tool head. The machine's frame is blue, and the work area is filled with various mechanical components and shavings. The lighting is bright, highlighting the metallic surfaces and the precision of the manufacturing process.

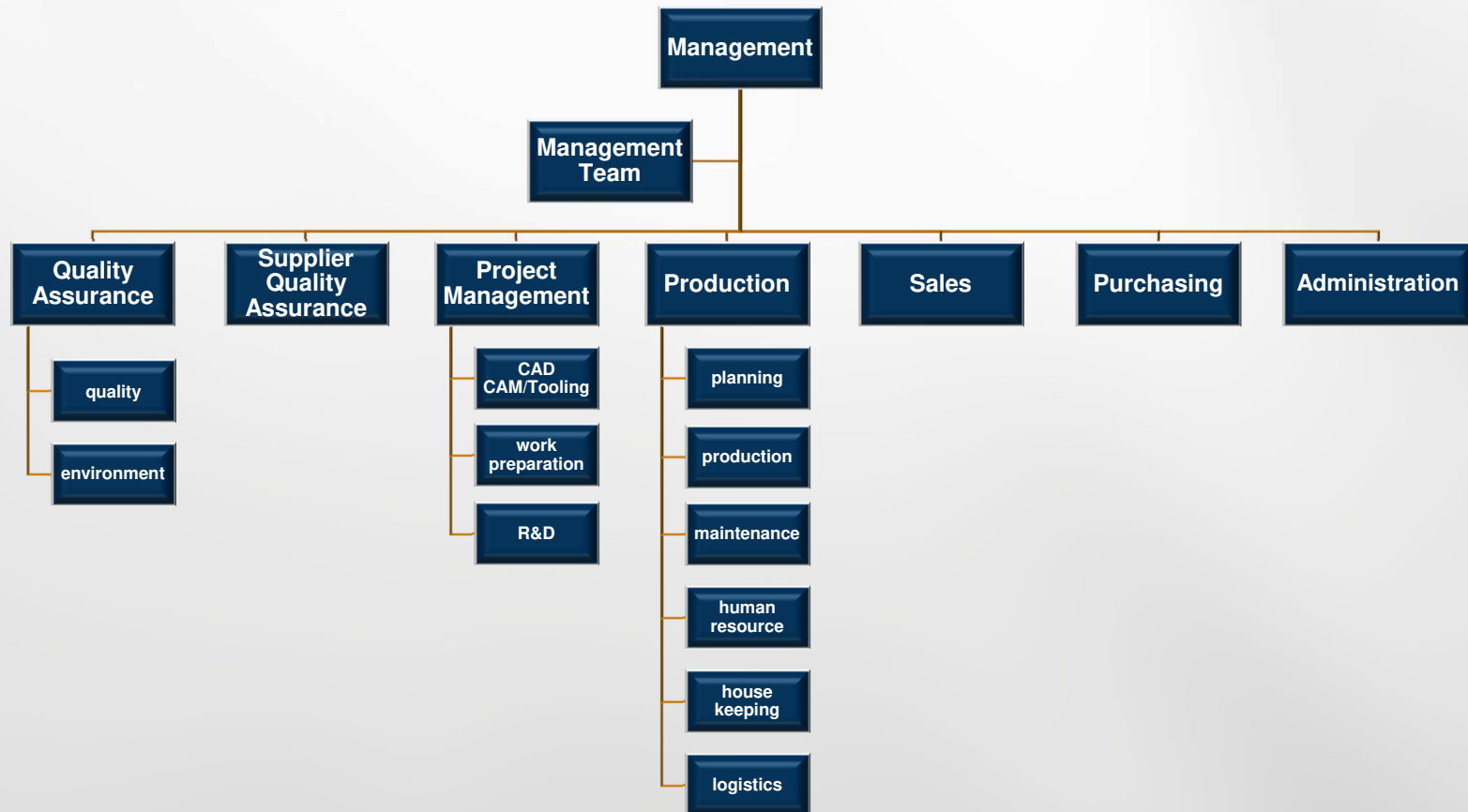
VDL TIM Hapert bv
Strength through cooperation



History of VDL TIM Hapert bv

- 1971** Founded by Piet van der Leegte jr.
- 1975** New plant located at the Industrieweg 21 in Hapert
- 1979** Wim van der Leegte buys 50% of the shares
- 1984** Piet van der Leegte dies at an age of 31
- 1984** Wim van der Leegte buys the remaining 50% of the shares from the widow of his brother
- 1992** New plant located at the Energieweg 2 in Hapert
- 2008** New office and enlarging the production plant at the Energieweg 2 in Hapert
- 2013** New welding plant specialised in machined welding constructions.
- 2015** Take over Smits Overpelt, start of producing Cylinders at VDL TIM Hapert.

Organisation chart VDL TIM haptert bv



Company Values VDL TIM Hapert bv

- **Quality**

To deliver good and reliable products

- **Environmental Care**

Is a corporate value for the VDL Groep

- **Safety**

For our customer and our people

Vision VDL TIM Hapert bv

- To be an outstanding supplier
- Open communication and cooperation
- Full system supplier
- Robotized Automation, if possible
- 100% customer satisfaction
- Continious Improvement
- Diversification in different industries

Objectives 2018

- Made profit will be re-invested in the own organization.
- Be flexible to be able to fulfill the demands of our customer
- Efficient using of people and goods
- Competitive production (Robotizing)
- Take care of an excellent delivery precision and the right Quality.
- To purchase against the best quality, delivery, price and terms.

We work with Automotive demands

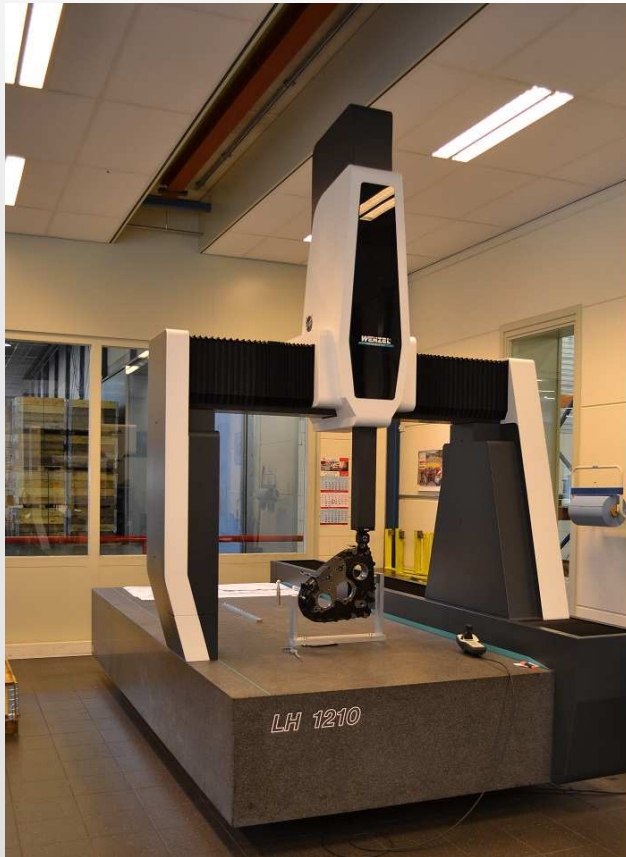
- ISO IATF 16949
- ISO 14001
- ISO 3834-2
- Projects with SIX SIGMA
- REACH (Enviroment)
- APQP / PPAP Requirements / PPAP Level 1
- SAFETY MANAGEMENT
- W.C.M. (Training programs for our employees like 5S and LEAN manufacturing)

Leading in automation

Competitive Production (Automation if possible)



3D CNC Machine WENZEL 3000x1200x1000



Warehousing



VDL Castings

- Foundry Heerlen: Moulding Line 850 x 630 x 330/330
 - Capacity moulding line : 130 moulds / hr
 - Melting : Cupola furnace 20t/hour
 - Core making : FCS 60 / H16 / H12 / H 6,5
 - Fettling : 15 cabins / 1 automatic grinding machine

- Foundry Weert: Moulding Line 1.250 x 850 x 400/400
 - Capacity moulding line : 60 moulds / hr
 - Melting : Electric induction furnace 10t/hour
 - Core making : L130 / L150 / H40 / L16
 - Fettling : 18 cabins / 1 automatic grinding machine

VDL Castings capabilities

Heerlen Capacity

36.000 ton/year in 3 shifts

Materials:

97 % S.G. Iron (incl. Simo, ADI, HiSi)

3 % Grey iron

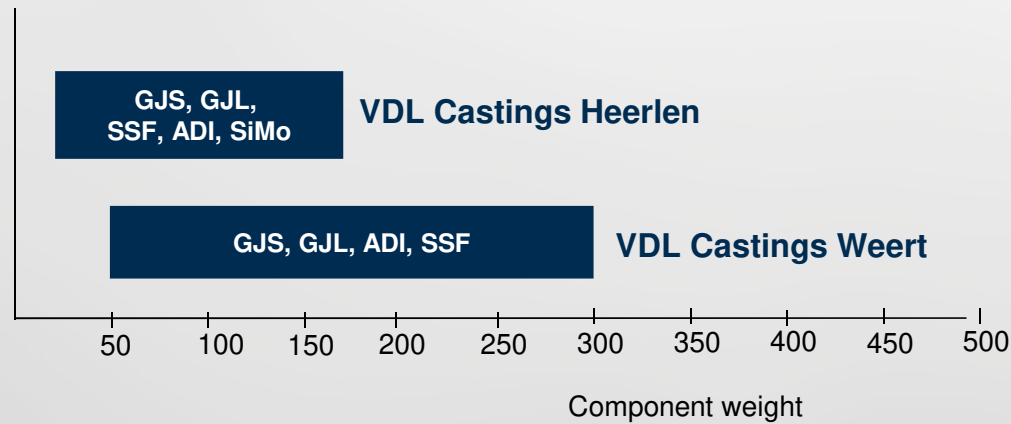
Weert Capacity

34.000 ton/year in 3 shifts

Materials:

92 % S.G. Iron (incl. Simo, ADI, HiSi)

8 % Grey iron



VDL Castings products

- (complex) cored
- small and medium size series
- brackets, hubs, housings, axles, vessels, hydraulic blocks, turbo housings



axle housing for a truck , EN-GJS-500, 55 kg



Swing frame for a mini excavator, EN-GJS-500, 16 kg



housing for hydraulic motor, EN-GJS-400, 74 kg

Bracket Reaction Rods

25 – 35 kg



Diversity in parts

1 – 150 kg



Gearboxes

75 – 115 kg



Various side plates

75 – 90 kg



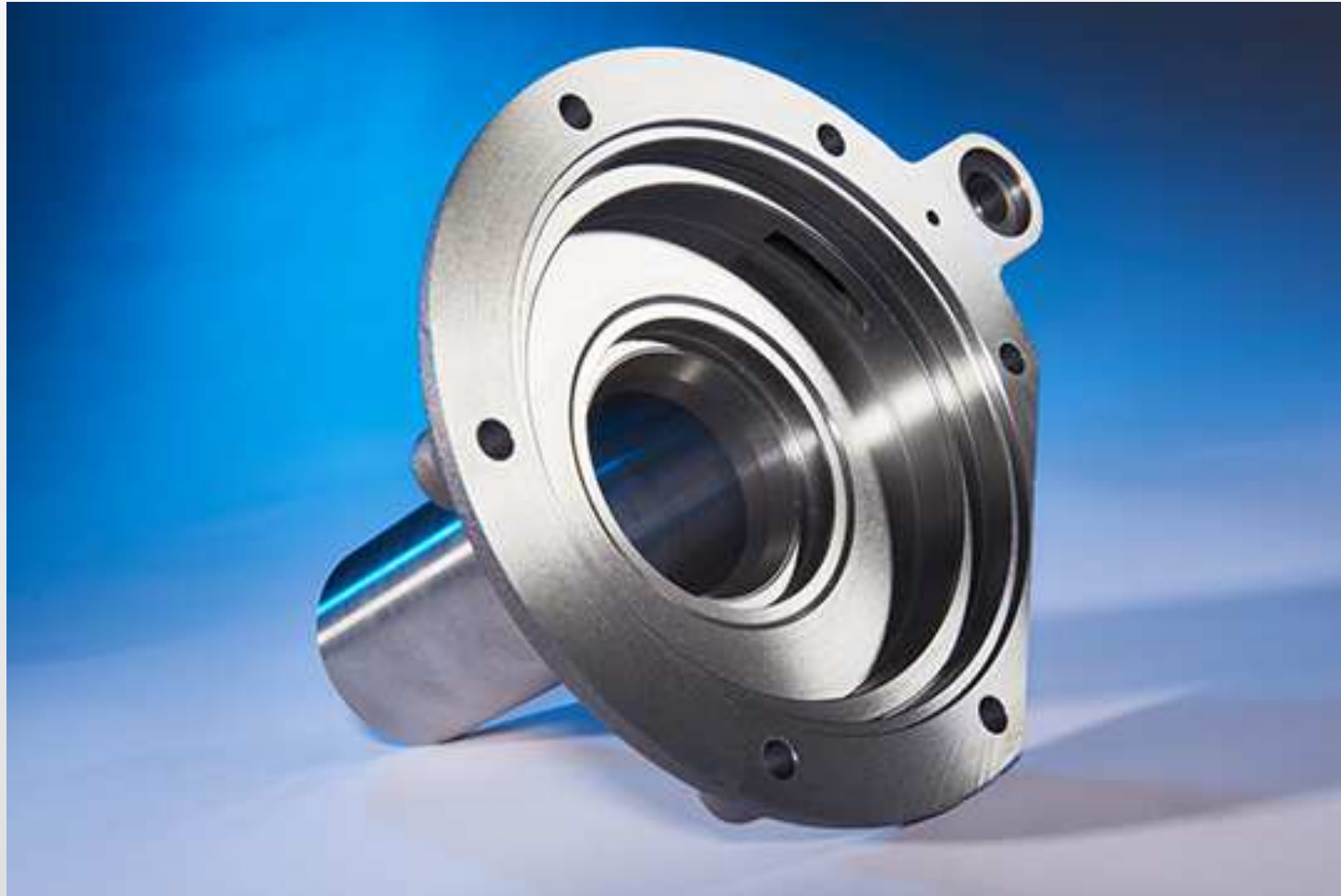
Steering support

2,6 kg



Gear Cover input Shaft

2,4 kg



Assy Stabilizer Bracket

6,4 kg



Engine Bracket

5,0 kg



Hydraulic Cylinders

Various dimensions



Thank you for your attention

